



Life Plan™            

The best, most comprehensive nutritional system in the world

GET TO KNOW LIFE PLAN

Would you like to feel more energized? Feel younger longer? Would you like a convenient, simple way get the most comprehensive nutrition every day? *** Feel amazing in 30 days with Shaklee Life Plan™ guaranteed—or your money back.**

Life Plan is the result of the foremost scientific research and decades of studies, designed to promote every aspect of your health. Life Plan—with **35 patents/pending**—combines the Shaklee Life Energizing Shake and Shaklee Life-Strip™, and is designed to promote every aspect of your health—with **nutrients that are clinically proven to help provide the foundation for a longer, healthier life.***

LIFE PLAN: LIFE ENERGIZING SHAKE

One shake does it all. The Life Energizing Shake is a delicious, protein-rich meal shake with **nutrients clinically proven to help create the foundation for a longer, healthier life.** With delicious flavors to choose from, Life Energizing Shake increases energy and keeps you feeling full and satisfied. Available in soy and non-soy formulas.

- Increases energy with 24 grams† of protein, including 16 grams of **ultra-pure, proprietary, plant-based, non-GMO protein** with precise ratios of all 9 amino acids
- Supports digestive and immune health with a powerful, patent-pending combination of prebiotics and **one billion CFU of patented probiotics**



- Retain lean muscle and achieve a healthier weight with added **leucine**
- Support heart and brain health with omega-3 ALA

†When prepared as directed with 1 cup nonfat milk

*These statements have not been evaluated by the Food and Drug Administration. These products are not intended to diagnose, treat, cure, or prevent any disease.

Life Plan

The best, most comprehensive nutritional system in the world



The Non-Soy Life Energizing Shake—Powerfully complete vegetable protein

Our exclusive, patent-pending blend of non-GMO, non-soy protein is rich in sacha inchi, potato, rice, pea, and leucine.

Both soy and non-soy versions:



NON-GMO



Gluten free



Lactose free



Kosher



Low glycemic



Free of artificial sweeteners, preservatives, and flavors

LIFE PLAN: LIFE STRIP™

Life-Strip is the culmination of years of research and quality testing to guarantee it delivers pure and potent vitamins, minerals, omega-3 fatty acids, polyphenols, antioxidants, and phytonutrients to **help provide the foundation for a longer, healthier life.***

- Backed by **The Landmark Study** (see page 3)
- Provides more than 100% Daily Value of essential vitamins
- Backed by more than 10 patents
- Available with or without iron
- Now even better: Smaller, easier-to-swallow OmegaGuard® Plus
- Now with more zeaxanthin and lutein for optimal eye health support*



VIVIX® LIQUIGELS TO SLOW AGING AT THE CELLULAR LEVEL* Contains an all-natural blend of a broad spectrum of polyphenols, backed by five patents, with key ingredients shown in laboratory studies to protect and repair DNA and combat free radicals. Also supports healthy vision.*



OMEGAGUARD PLUS FOR HEART HEALTH; BRAIN HEALTH* 1,000 mg of pure, ultra-concentrated DHA/EPA omega-3 fatty acids sustainably sourced from wild fish from pure Alaskan waters. Now even smaller!



ADVANCED MULTIVITAMIN VITA-LEA® LIFE FOR COMPLETE NUTRITION; BONE AND JOINT HEALTH* Dissolves in less than 30 minutes in the stomach and is designed to enhance absorption of folic acid from the patented microcoating; includes heart-healthy CoQ₁₀* and vitamin E. Now with more zeaxanthin and lutein for optimal eye health support.*



B+C COMPLEX FOR IMMUNE HEALTH; ENERGY* Shown in a clinical study to provide up to 198% greater absorption of B vitamins over 12 hours.

*These statements have not been evaluated by the Food and Drug Administration. These products are not intended to diagnose, treat, cure, or prevent any disease.

Life Plan

The best, most comprehensive nutritional system in the world

THE SHAKLEE DIFFERENCE

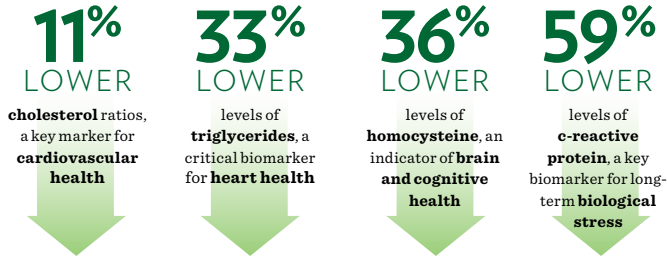


The power of nature,
unleashed by science.
Safe. Proven. Guaranteed.

At Shaklee, we are committed to innovating through science and looking to nature for the answers that can provide healthier lives. We ensure the highest quality and safety standards—conducting over 100,000 quality tests per year to ensure our products are safe for you and your family.

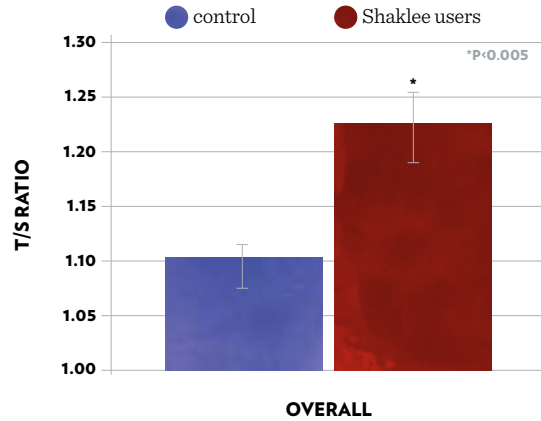
The research behind **Life Plan** includes more than 125 published scientific papers and presentations from studies supported by Shaklee. These include **The Landmark Study** and **The Telomere Study**.

- **The Landmark Study** was conducted in partnership with University of California Berkeley and remains one of the largest studies on long-term supplement users. The study showed that **Shaklee supplement users had double-digit better biomarkers** of heart, brain, and cognitive health compared to nonsupplement or single-supplement users.



- **The Telomere Study** was based on research conducted by Elizabeth Blackburn, Ph.D., who was awarded the 2009 Nobel Prize for Medicine and is a Shaklee Scientific Board Advisor. In the Shaklee preliminary **telomere study**, users of Shaklee supplements for at least five years had a 40% lower rate of telomere shortening across the adult age range compared to an age-matched healthy control group. Telomeres are the protective caps of repetitive DNA at the end of chromosomes. Over time, our telomeres gradually become shorter and telomere length is thought to be a marker of overall health.

SHAKLEE USERS HAD LONGER TELOMERES*



Plus, **Life-Strip** features:



- Patented Shaklee Micronutrient Advanced Release Technology™ (S.M.A.R.T.™), a unique delivery system designed to dramatically improve absorption of key nutrients in the body

In addition, **Life Energizing Shake** features:

- 24 grams† of proprietary, **ultra-pure, plant-based, non-GMO protein** with precise ratios of all 9 essential amino acids for perfect protein delivery and absorption
- Added **leucine**
- **One billion CFU of patented probiotics:**
 - 780 times more viable than the probiotics found in yogurt†
 - Clinically tested probiotic that builds its own protective coating, allowing it to survive passage through stomach acid to reach your lower digestive system
- Patent-pending pre- and probiotic combination
- Patent-pending non-soy, plant-based protein blend

†When prepared as directed with 1 cup nonfat milk

*These statements have not been evaluated by the Food and Drug Administration. These products are not intended to diagnose, treat, cure, or prevent any disease.

Life Plan

The best, most comprehensive nutritional system in the world

IS LIFE PLAN RIGHT FOR YOU?

- ✓ If you are looking to ensure you are receiving the optimal daily nutrition you need to provide the foundation for a longer, healthier life.*

NOTE: Due to the inclusion of Vivix®, Life-Strip is not recommended for pregnant or lactating women, or anyone younger than 18 years old.

Contains Vitamin K: If taking blood-thinning medications, consult a physician prior to use.

SPECIAL OFFER:

When you place the Life Plan on AutoShip receive a coupon for a Shaklee product for only \$10 (up to \$100 SRP value).

LEARN MORE



Watch the Life Plan video.



Watch the Vivix video.



Watch the Why Supplement? video.



[Try our delicious recipes](#)

Visit the [Life Energizing Shake Product page](#) to see Nutrition Facts for all varieties.

Life Energizing Shake

Nutrition Facts (Vanilla Soy Pouch)



Serving Size: 2 Scoops (43 g)
 Servings Per Container: 30
 Directions: Mix 2 scoops in 1 cup of nonfat milk or your favorite beverage.

Amount Per Serving	Mix Alone	with Nonfat Milk
Calories	170	260
Calories from Fat	30	30
	Amount Per Serving/% Daily Value*	
Total Fat	3 g/5%	3 g/5%
Saturated Fat	0 g/0%	0 g/0%
Trans Fat	0 g	0 g
Polyunsaturated Fat	1 g	1 g
Monounsaturated Fat	1.5 g	1.5 g
Cholesterol	0 mg/0%	5 mg/2%
Sodium	240 mg/10%	340 mg/14%
Potassium	310 mg/9%	690 mg/20%
Total Carbohydrate	18 g/6%	30 g/10%
Dietary fiber	6 g/24%	6 g/24%
Soluble Fiber	4 g	4 g
Sugars	10 g	22 g
Protein	16 g/32%	24 g/49%

	% Daily Value*	% Daily Value*
Vitamin A	10%	20%
Vitamin C	35%	35%
Calcium	35%	60%
Iron	10%	10%
Vitamin D	35%	60%
Vitamin E	35%	35%
Thiamin	35%	40%
Riboflavin	35%	60%
Niacin	35%	35%
Vitamin B ₆	35%	40%
Folate	35%	40%
Vitamin B ₁₂	35%	50%
Biotin	35%	35%
Pantothenic Acid	35%	45%
Phosphorus	35%	60%
Magnesium	35%	40%
Zinc	35%	40%
Selenium	35%	45%
Copper	35%	35%
Manganese	35%	35%
Chromium	80%	80%
Molybdenum	35%	35%
Chloride	8%	8%

*Percent Daily Values are based on a 2,000 calorie diet. Your daily values may be higher or lower depending on your calorie needs.

INGREDIENTS: SHAKLEE PROPRIETARY NON-GMO PROTEIN BLEND (SOY PROTEIN CONCENTRATE, SOY PROTEIN ISOLATE, L-LEUCINE, RICE PROTEIN CONCENTRATE), NATURAL CANE SUGAR, PREBIOTIC BLEND (SOLUBLE CORN FIBER, SHORT-CHAIN FRUCTOOLIGOSACCHARIDES), HIGH OLEIC SUNFLOWER OIL POWDER, DICALCIUM PHOSPHATE, NATURAL FLAVOR, SOY LECITHIN, MILLED GOLDEN FLAXSEED, POTASSIUM CHLORIDE, MAGNESIUM OXIDE, SILICON DIOXIDE, PROBIOTICS (BACILLUS COAGULANS), ASCORBIC ACID, SELENIUM YEAST, STEVIA EXTRACT (97% STEVIOL GLYCOSIDES), D-ALPHA TOCOPHERYL ACETATE, MOLYBDENUM YEAST, NIACINAMIDE, ZINC OXIDE, COPPER GLUCONATE, CALCIUM PANTOTHENATE, VITAMIN A PALMITATE, VITAMIN B12, MANGANESE SULFATE, VITAMIN D3, CHROMIUM NICOTINATE, PYRIDOXINE HYDROCHLORIDE, RIBOFLAVIN, THIAMINE MONONITRATE, FOLIC ACID, BIOTIN.

*These statements have not been evaluated by the Food and Drug Administration. These products are not intended to diagnose, treat, cure, or prevent any disease.

Life Plan

The best, most comprehensive nutritional system in the world

ORDER NOW

#89383 Shaklee Life Plan™ (customizable at checkout)

Suggested Retail Price: \$287.35 | Member Price: \$244.25

Point Value: 166.67

SAVE
10%

AUTOSHIP PRICE

SUGGESTED RETAIL PRICE: \$258.61

MEMBER PRICE: \$219.82

Point Value: 150.00

Supplement Facts

Serving Size: 1 Life-Strip™

	With Iron	Without Iron
Amount Per Serving/Daily Value**		
Calories	35	35
Calories from Fat	20	20
Total Fat	2 g/3%**	2 g/3%**
Total Carbohydrate	2 g/1%**	2 g/1%**
Protein	1 g/2%**	1 g/2%**
Vitamin A (75% as beta-carotene from <i>Blakeslea trispora</i> and 25% as vitamin A acetate)	6,250 IU/125%	6,250 IU/125%
Vitamin C (as calcium ascorbate and ascorbic acid)	500 mg/833%	500 mg/833%
Vitamin D ₃ (as cholecalciferol)	1,250 IU/313%	1,250 IU/313%
Vitamin E (as d-alpha-tocopheryl acid succinate and d-alpha-tocopherol)	200 IU/667%	200 IU/667%
Vitamin K (as phytonadione)	100 mcg/125%	100 mcg/125%
Thiamin (as thiamine mononitrate)	9.75 mg/650%	9.75 mg/650%
Riboflavin	11 mg/650%	11 mg/650%
Niacin (as niacinamide)	130 mg/650%	130 mg/650%
Vitamin B ₆ (as pyridoxine hydrochloride)	14 mg/700%	14 mg/700%
Folate (as folic acid)	400 mcg/100%	400 mcg/100%
Vitamin B ₁₂ (as cyanocobalamin)	54 mcg/900%	54 mcg/900%
Biotin (as d-biotin)	300 mcg/100%	300 mcg/100%
Pantothenic Acid (as d-calcium pantothenate)	65 mg/650%	65 mg/650%
Calcium (as tricalcium phosphate, calcium carbonate, calcium ascorbate, and calcium silicate)	500 mg/50%	500 mg/50%
Iron (as ferrous fumarate)	18 mg/100%	0 mg/0%
Phosphorus (as tricalcium phosphate)	100 mg/10%	100 mg/10%
Iodine (as potassium iodide and sea kelp)	150 mcg/100%	150 mcg/100%
Magnesium (as magnesium oxide)	200 mg/50%	200 mg/50%
Zinc (as zinc oxide)	22.5 mg/150%	22.5 mg/150%
Selenium (as trace mineral protein hydrolysate)	70 mcg/100%	70 mcg/100%
Copper (as copper gluconate)	1 mg/50%	1 mg/50%
Manganese (as manganese gluconate)	2 mg/100%	2 mg/100%
Chromium (as trace mineral protein hydrolysate)	120 mcg/100%	120 mcg/100%
Molybdenum (as trace mineral protein hydrolysate)	75 mcg/100%	75 mcg/100%
Sodium	10 mg/<1%	10 mg/<1%
Total Omega-3 fatty acids (from ultra-pure marine lipid concentrate)	1,063 mg/†	1,063 mg/†
Our Full Spectrum Includes:		
EPA (eicosapentaenoic acid)	713 mg/†	713 mg/†
DHA (docosahexaenoic acid)	287 mg/†	287 mg/†
And five other naturally found fatty acids, including: docosapentaenoic, stearidonic, eicosatetraenoic, heneicosapentaenoic, and alpha-linolenic acids.	63 mg/†	63 mg/†
Rejuvetrol® Plus Blend Concentrate	716 mg/†	716 mg/†
Muscadine Grape Extract (<i>Vitis rotundifolia</i>) (fruit pomace), Trans-Resveratrol (<i>Polygonum cuspidatum</i>) (root) standardized to a minimum of 98% purity, Red Wine Extract (<i>Vitis vinifera</i>) (fruit pomace), Pomegranate Extract (<i>Punica granatum</i>) (fruit), Chebulic Myrobalan Extract (<i>Terminalia chebula</i>) (fruit), Black Currant Extract (<i>Ribes nigrum</i>) (fruit), Purple Carrot Extract (<i>Daucus carota sativus</i>) (root)		
Lycopene (from tomato extract)	5 mg/†	5 mg/†
Lutein (from marigold flower extract)	5 mg/†	5 mg/†
Zeaxanthin (from marigold flower extract)	250 mcg/†	250 mcg/†
Coenzyme Q ₁₀ (as ubiquinone)	30 mg/†	30 mg/†
N-acetylcysteine	50 mg/†	50 mg/†
Nickel (as trace mineral protein hydrolysate)	5 mcg/†	5 mcg/†
Tin (as trace mineral protein hydrolysate)	10 mcg/†	10 mcg/†
Vanadium (as trace mineral protein hydrolysate)	20 mcg/†	20 mcg/†
Boron (as trace mineral protein hydrolysate)	1 mg/†	1 mg/†
Silicon (as silicon dioxide)	11 mg/†	11 mg/†

**Percent Daily Values (DV) are based on a 2,000 calorie diet.

†Daily Value not established.

OTHER INGREDIENTS: GELATIN, MCT OIL (MEDIUM CHAIN TRIGLYCERIDES FROM PALM AND COCONUT OILS), GLYCERIN, HYDROXYPROPYL METHYLCELLULOSE, HYDROXYPROPYL CELLULOSE, MICROCRYSTALLINE CELLULOSE, YELLOW BEESWAX, CARAMEL COLOR, SOY LECITHIN, CROSCARMELOSE SODIUM, GUAR GUM, SEA KELP, RED GRAPE JUICE EXTRACT, CITRUS BIOFLAVONOIDS (GRAPEFRUIT, LEMON, ORANGE), ORANGE OIL, ACEROLA EXTRACT, ALFALFA POWDER, CHOLINE BITARTRATE, HESPERIDIN COMPLEX, INOSITOL, MIXED TOCOPHEROLS, RICE BRAN POWDER, ROSE HIPS POWDER, RIBOFLAVIN COLOR, SODIUM COPPER CHLOROPHYLLIN.